

THE 1400 POLO

Main Level: 1400 Sq. Ft.

Total: 1400 Sq. Ft.

Garage: 420 Sq. Ft.

FEATURES:

9 Foot Reinforced Poured Foundation

10 Year Dry Basement Walls

Exterior Drain Tile with Sump & Pump

Heritage 30 year Shingle Roof

Maintenance Free Windows, Grills on Front

Preprimed Hardboard Lap Siding

Custom Birch Cabinets

Oak or Distressed Wood Floors

Granite or Quartz Tops in Kitchen and Baths

Tile Backsplash in Kitchen

Large walk in Pantry

Drop Zone/Lockers

Tile Floors in Entry, Laundry & Baths

Under Cabinet Lighting available

Decorative Rocker Switches

Walk in Shower in Master Bath

Oversized and Painted Woodwork

Metal Spindles on Stairs and Deck

Gas Direct Vent Fireplace with Stone Front

Round Drywall Corners

Dead Bolts & Storm Doors

93% Lennox Furnace and 13 Seer A/C

Insta-Hot Tankless Gas Water Heater

Power Humidifier

3/4 Basement Bathroom Rough-in

Blown-in Premium Ultra-Fit Insulation

Insulated Steel Garage Door

Security System Prewire

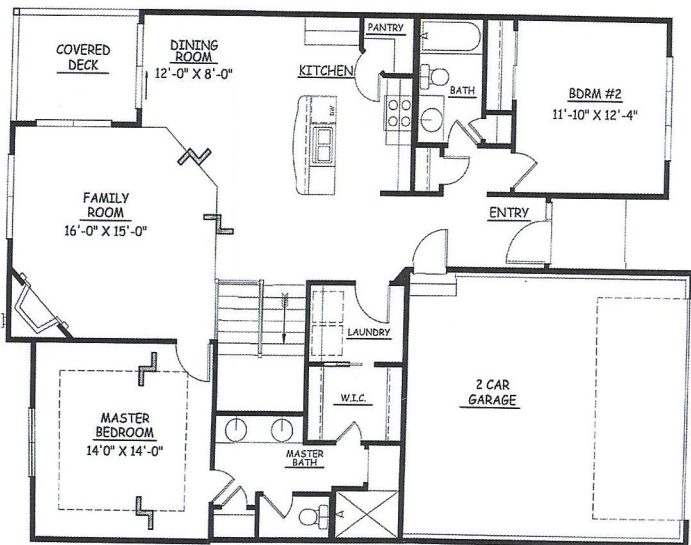
Consultation with Prof. Decorator included

Sprinkler System

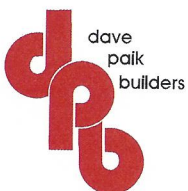
Curb Grind

Passive Radon System

Geo Thermal Heating Available



main floor



402-677-4497
DavePaikBuilders.com

Floorplans are a representation of the homes and may vary significantly based on elevation and selected options and may change without notice. Optional features may be included at additional cost subject to construction cut off dates. Buyer to verify all.

All floorplans copyright Dave Paik Builders.

