

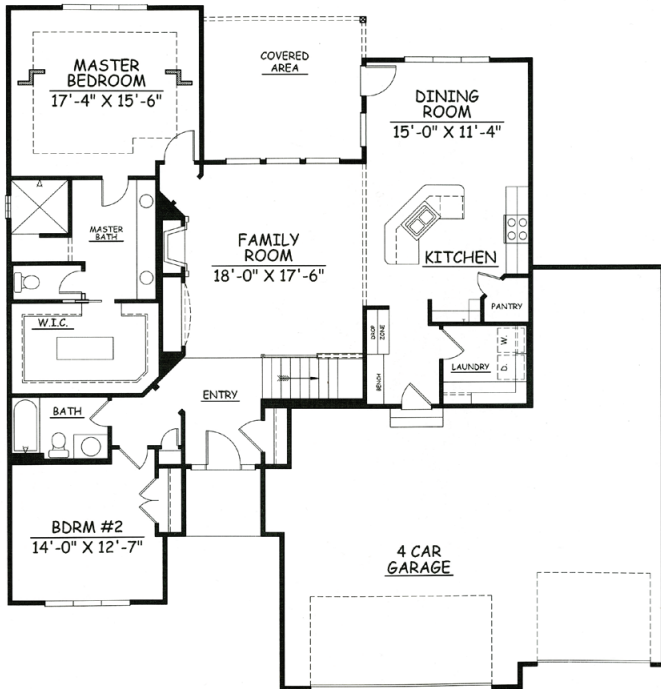
# 1700 ZIMMERMAN



Main Level:	1703 Sq. Ft.
Finished Lower Level:	1028 Sq. Ft.
Total:	2731 Sq. Ft.

## FEATURES:

- Four Car Garage Included
- 9 Foot Reinforced Poured Foundation
- 10 Year Dry Basement Walls
- Exterior Drain Tile with Sump & Pump
- Heritage 30 year Shingle Roof
- Maintenance Free Windows, Grills on Front
- Preprimed Hardboard Lap Siding
- Custom Birch Cabinets
- Oak or Distressed Wood Floors
- Granite or Quartz Tops in Kitchen and Baths
- Tile Backsplash in Kitchen
- Drop Zone
- Tile Floors in Entry, Laundry & Baths
- Under Cabinet Lighting available
- Decorative Rocker Switches
- Walk in Shower in Master Bath
- Oversized and Painted Woodwork
- Metal Spindles on Stairs and Deck
- Gas Direct Vent Fireplace with Stone Front
- Round Drywall Corners
- Dead Bolts & Storm Doors
- 93% Lennox Furnace and 13 Seer A/C
- Power Humidifier
- 3/4 Basement Bathroom Finished
- Blown-in Premium Ultra-Fit Insulation
- Insulated Steel Garage Door
- Security System Prewire
- Consultation with Prof. Decorator included
- Sprinkler System
- Curb Grind
- Passive Radon System



**402-677-4497**  
**DavePaikBuilders.com**

Floorplans are a representation of the homes and may vary significantly based on elevation and selected options and may change without notice. Optional features may be included at additional cost subject to construction cut off dates. Buyer to verify all.  
All floorplans copyright Dave Paik Builders.

