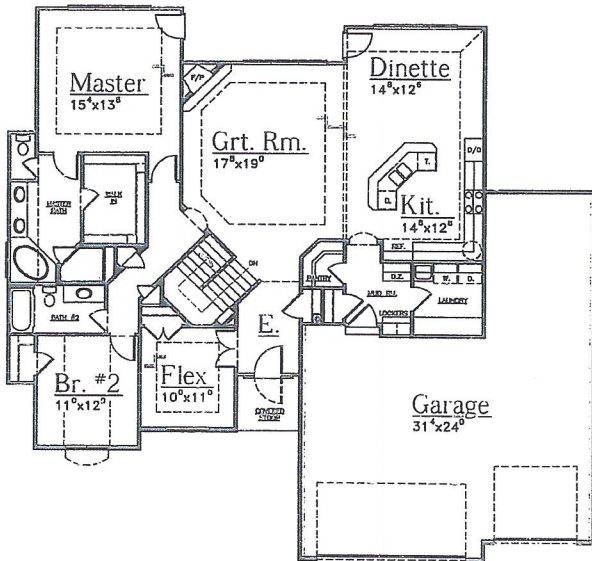


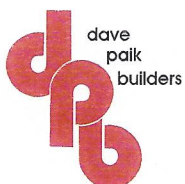
THE 1987 VENICE

Main Level: 1987 Sq. Ft.
 Total: 1987 Sq. Ft.
 Garage: 960 Sq. Ft.



FEATURES:

- 9 Foot Reinforced Poured Foundation
- 10 Year Dry Basement Walls
- Exterior Drain Tile with Sump & Pump
- Heritage 30 year Shingle Roof
- Maintenance Free Windows, Grills on Front
- Preprimed Hardboard Lap Siding
- 9 & 10 & 11 Foot ceilings
- Custom Birch Cabinets
- Oak & Distressed Wood Floors available
- Granite or Quartz Tops in Kitchen and Baths
- Tile Backsplash in Kitchen
- Large walk in Pantry
- Drop Zone/Lockers
- Tile Floors in Entry, Laundry & Baths
- Under Cabinet Lighting
- Decorative Rocker Switches
- Walk in Shower in Master Bath
- Oversized and Painted Woodwork available
- Metal Spindles on Stairs and Deck
- Gas Direct Vent Fireplace with Stone Front
- Round Drywall Corners
- Dead Bolts & Storm Doors
- Covered Porch and Stoop
- Covered Deck on Walkout (Trex or Cedar available)
- 93% Lennox Furnace and 13 Seer A/C
- 50 Gallon Gas Water Heater
- Power Humidifier
- 3/4 Basement Bathroom Rough-in
- Blown-in Premium Ultra-Fit Insulation
- Insulated Steel Garage Door
- 14x14 Patio
- Security System Prewire, Cable & Phone
- Consultation with Prof. Decorator included
- Sprinkler System
- Curb Grind
- Garage Door Opener included
- Customized Plan Drawings included



402-677-4497
DavePaikBuilders.com

Floorplans are a representation of the homes and may vary significantly based on elevation and selected options and may change without notice. Optional features may be included at additional cost subject to construction cut off dates. Buyer to verify all. All floorplans copyright Dave Paik Builders.

