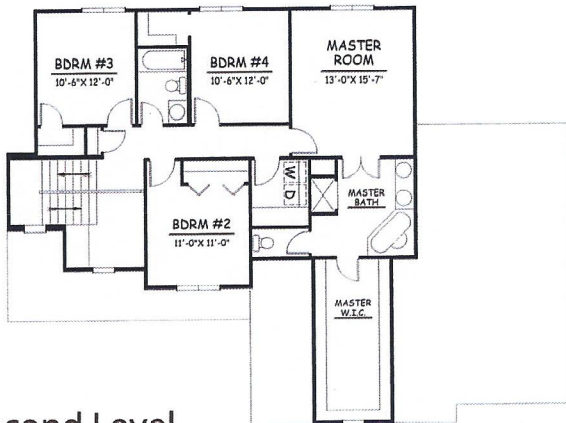
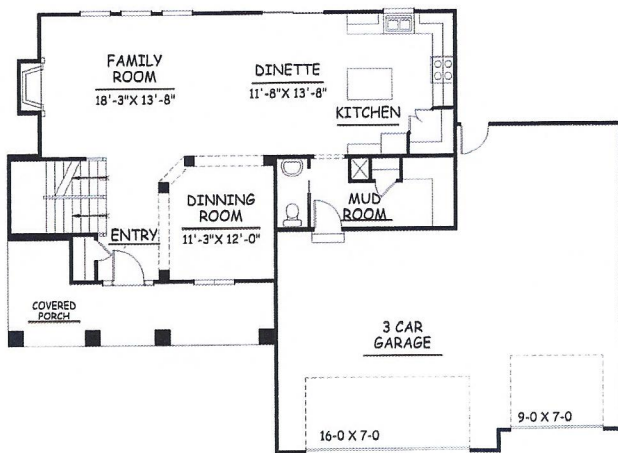


THE 2277 CASTLEBERRY



Second Level

UPPER LEVEL FLOOR PLAN

Main Level: 1000 Sq. Ft.
Second Level: 1177 Sq. Ft.
Total: 2277 Sq. Ft.
Garage: 876 Sq. Ft.

FEATURES:

- 9 Foot Reinforced Poured Foundation
- 10 Year Dry Basement Walls
- Exterior Drain Tile with Sump & Pump
- Heritage 30 year Shingle Roof
- Maintenance Free Windows, Grills on Front
- Preprimed Hardboard Lap Siding
- Custom Birch Cabinets
- Oak & Distressed Wood Floors available
- Granite or Quartz Tops in Kitchen and Baths
- Tile Backsplash in Kitchen
- Large walk in Pantry
- Drop Zone/Lockers
- Tile Floors in Entry, Laundry & Baths
- Under Cabinet Lighting Available
- Decorative Rocker Switches
- Walk in Shower in Master Bath
- Oversized and Painted Woodwork
- Metal Spindles on Stairs and Deck
- Gas Direct Vent Fireplace with Stone Front
- Round Drywall Corners
- Dead Bolts & Storm Doors
- 93% Lennox Furnace and 13 Seer A/C
- 50 Gallon Gas Water Heater
- 3/4 Basement Bathroom Rough-in
- Blown-in Premium Ultra-Fit Insulation
- Insulated Steel Garage Door
- 14x14 Patio
- Security System Prewire
- Consultation with Prof. Decorator included
- Sprinkler System
- Curb Grind
- Passive Radon System



402-677-4497
DavePaikBuilders.com

Floorplans are a representation of the homes and may vary significantly based on elevation and selected options and may change without notice. Optional features may be included at additional cost subject to construction cut off dates. Buyer to verify all. All floorplans copyright Dave Paik Builders.

